

FASTER & AFORDABLE INTERNET AT SEA

now come with free tv channels



Skyreach is legal Satellite Communication service provider for Indonesian water territory, providing data/internet, voice, video, GPS tracking and IoT purpose. In addition, crew members may enjoy free-to-air TV channels. Skyreach provides 24 hours monitoring support to make sure connectivity to your fleet always up. Our onsite engineers stationed at many cities of Indonesia that may nearest to your fleet location to ensure faster support for you.

Features:

- ✓ Wide maritime coverages
- ✓ Integrated satcomm & TVRO hardware
- ✓ Best for: data, voice & video streaming
- ✓ Connectivity: internet or private network
- ✓ GPS positions & IoT

Service Options:

- ✓ Frequency band using C-band & Ku-band
- ✓ Metered, Unmetered or Hybrid

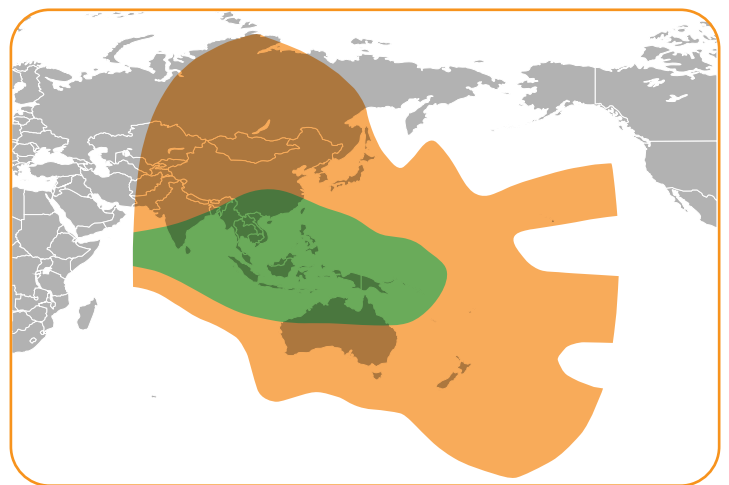
SAILINK ANTENNA



Using onboard terminals with advanced technology and a fully integrated lower deck unit that has better and more reliable features is also easier to install.

Various antenna size (60cm, 80cm or 1 meter class) are fully stabilized offers outstanding performance and stability. Sailink service supports various applications including internet access, email, data transfer, web surfing, VoIP VPN security, etc. Suitable for merchant vessels, fishing and offshore vessels, luxury yachts, leisure boats and more.

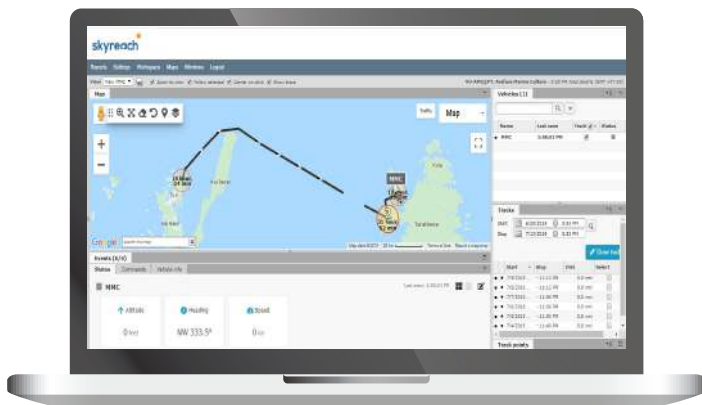
OUR COVERAGE



Our partnership with leading global satellite operators allows us to deliver service wherever needed. Skyreach may use C-Band or Ku-Band frequency over various satellites to reach customers across Indonesia and overseas.



TRACKING & IOT

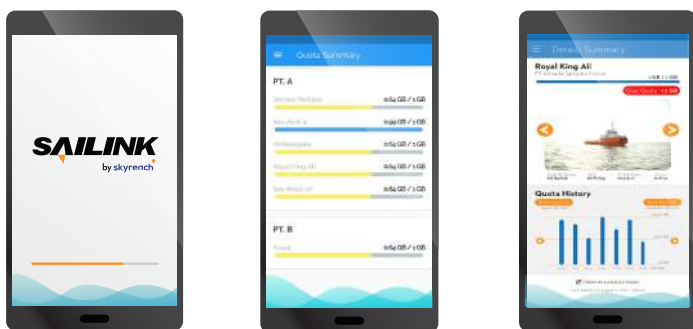


VTrack Dashboard Application

We aware when sailing in the high sea, by any reason, the valuable ships and it's cargo should be monitored at all time. Ship location, speed, track, weather, and cargos condition should be assured in well condition upon arrival at it's destination.

Our continue development in VTrack, GPS tracking and IoT, become an important solutions to help our customers to be able to eye on their ships, operates efficiently, manageable risk and eventually increases productivity beyond expectation.

SAILINK MOBILE APPS



Sailink Mobile Application

Sailink mobile app offers in-depth features & information to ships owner, quick access ships details, photo & ships location, monthly allowance and actual usage Sailink's service.

Sailink mobile app can be easily downloaded from Google Play Store and run on any mobile phone. Alternatively, Sailink information can also be accessed through web browser on desktop.

Free TV Channels

by **ninmedia**
TV RAKYAT INDONESIA



PT Skyreach - Head Office :

Hermina Tower Lantai 20 Suite A/B Jl. HBR Motik No. 4, Kemayoran, DKI Jakarta. E-mail: info@skyreach.id

[f Skyreach.id](https://www.facebook.com/Skyreach.id)
[pt.skyreach](https://www.instagram.com/pt.skyreach)
[in Skyreach](https://www.linkedin.com/company/Skyreach)
www.skyreach.id
[CALL CENTER 3100 100](tel:3100100)